

Compiled by the Planning Projects and
Environment Initiatives Teams
at Brighton & Hove City Council

INTERREG IVB Lively Cities Project
Ann Street / Providence Place Gardens
Long-term implementation plan

December 2013

Printing advice:

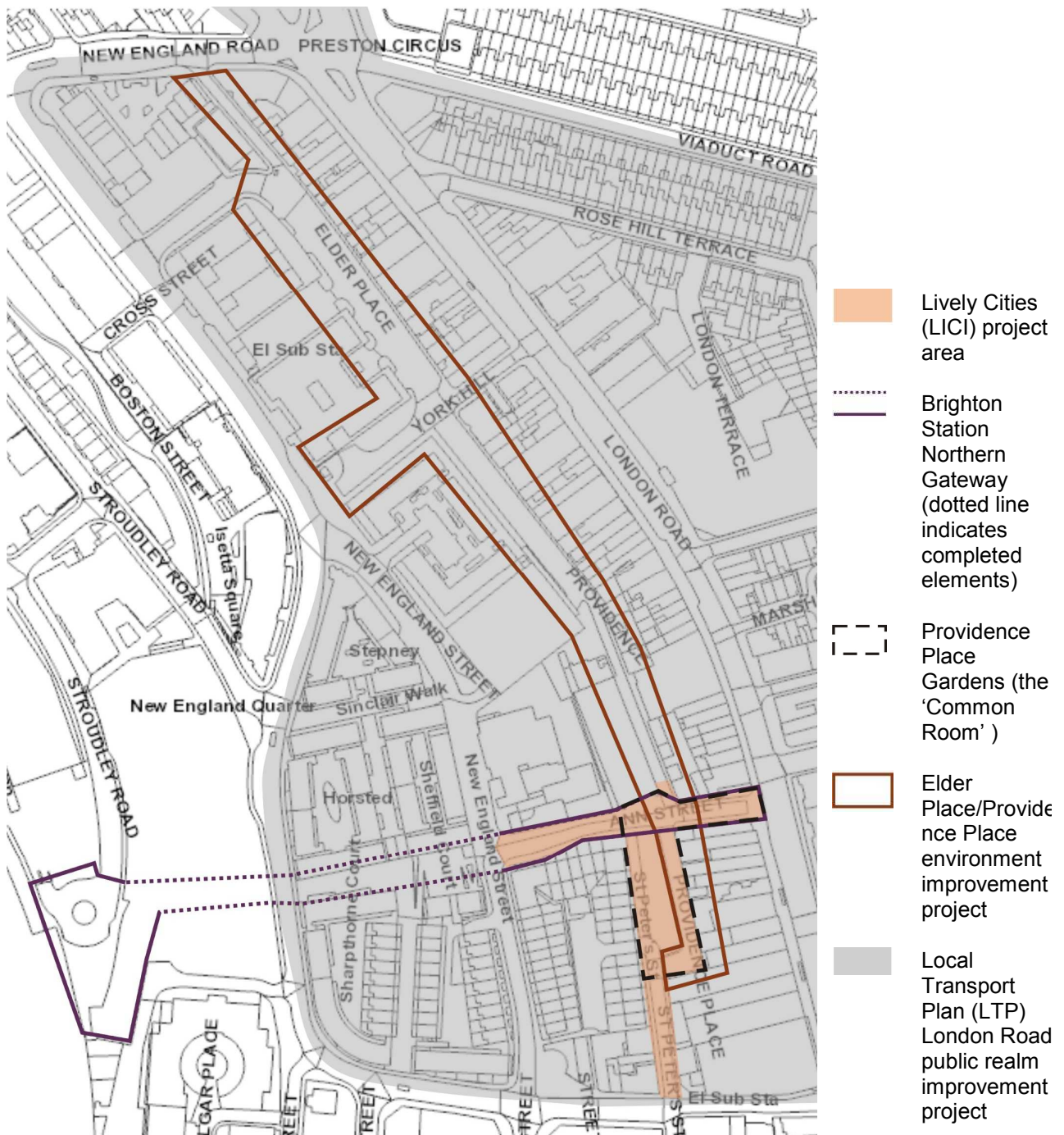
For optimum results, this document should be printed back to back. This is because information provided in the even pages has been designed to be complemented by



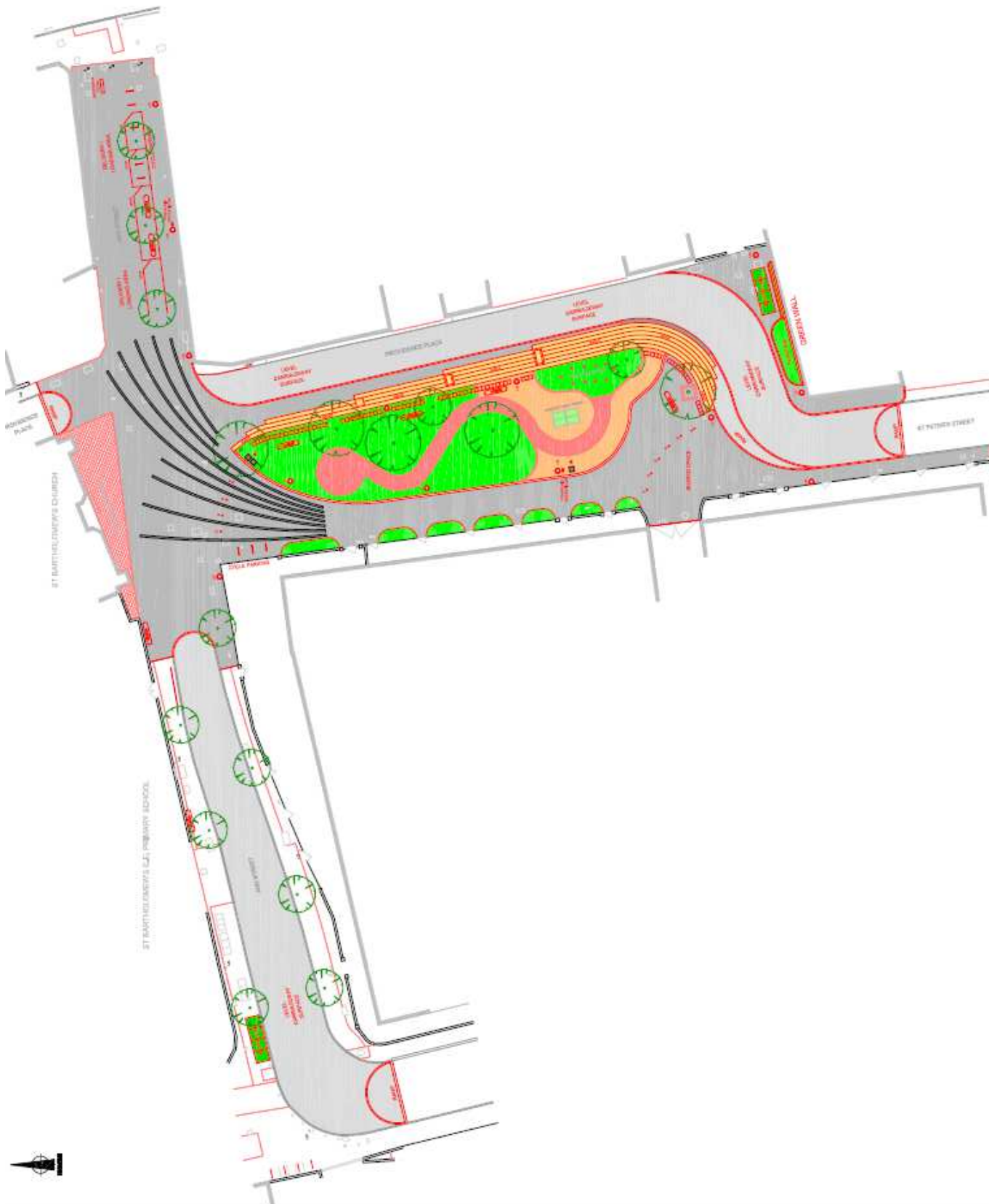
Implementation plan

This document focuses on how long-term proposals for the Ann Street/Providence Place area of Brighton, known as the Lively Cities (LIC) project will be implemented.

The map below shows how the improvements relate to and overlap with other public realm improvement projects being currently carried out in the London Road / Brighton Station area. This overlap allows the improvements to be financed from a variety of funding streams.



The revised long-term plans following the 2013 consultation are detailed below.

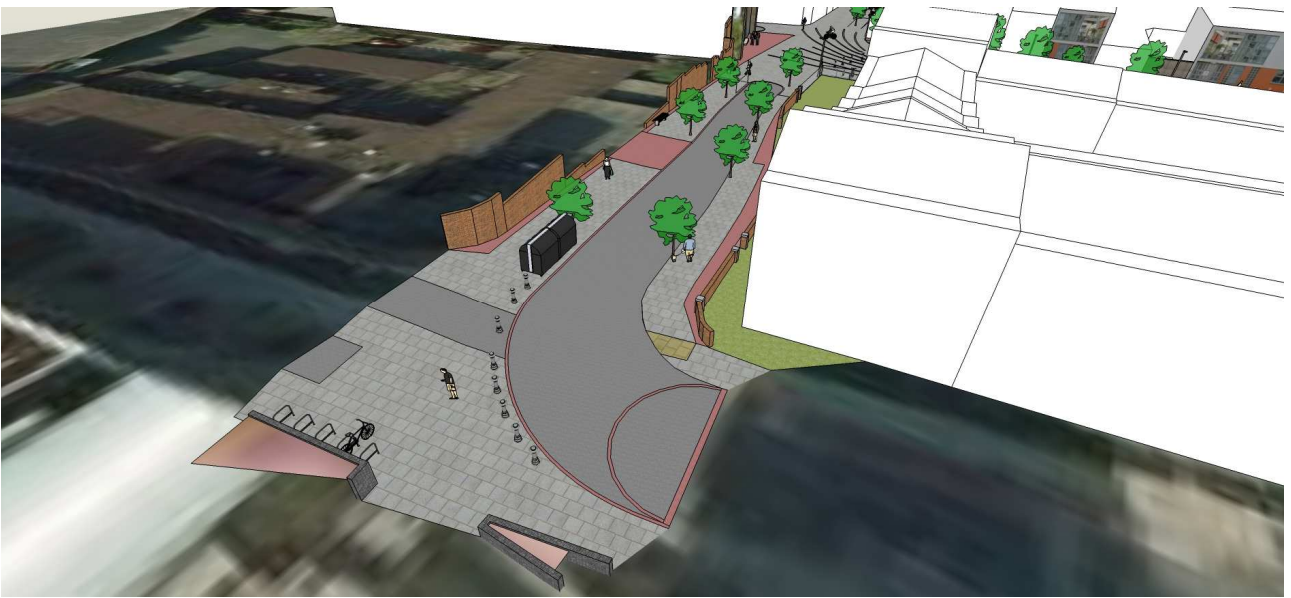


Artist's impression of Providence Place Gardens





Artist's impression of upper Ann Street and pocket square





The implementation plan below provides an estimated timetable for implementation of long-term proposals for the Ann Street / Providence Place Gardens area of Brighton. It will be regularly assessed and monitored.

	Project	Details	Partners	Funding mechanisms	Timescale
Providence Place Gardens	Terraced steps and landscape improvements to park area	Formal consultation on Traffic Orders (TO) on relocation of resident parking and introduction of HGV access restrictions <hr/> Detailed design for implementation	Council, City College (terraced steps), St Bartholome w's School	LICI, LTP and Section 106 (secured)	Short term
	Providence Place shared space	Formal consultation on TOs and other regulatory framework requirements to regulate shared space <hr/> Detailed design for implementation	(pedestrian education training)	LTP and Section 106 (to be identified)	Medium term (dependent on funding being secured)
Ann Street	Pocket square (bottom of Ann Street)	Formal consultation on TOs on relocation of disabled parking <hr/> Detailed design for implementation	Council	LICI, LTP and Section 106 (Brighton Station Gateway)	Short term
	Share space linking St Bartholomew's Church to park	Formal consultation on TOs and other regulatory framework requirements to regulate shared space <hr/> Detailed design for implementation	Council		Medium term
	Share space top of Ann Street	Formal consultation on TOs and other regulatory framework requirements to regulate shared space <hr/> Detailed design for implementation	Council, Sainsburys (cycle stands)		

